

House - Terraced (EPC Rating: E)

17 HOLMWOOD GROVE, DARLINGTON,  
DL1 3AT  
PCM

£625 PCM

**TLG** | The Letting Group  
Lettings | Management | Repossession



# 2 Bedroom House - Terraced located in Darlington

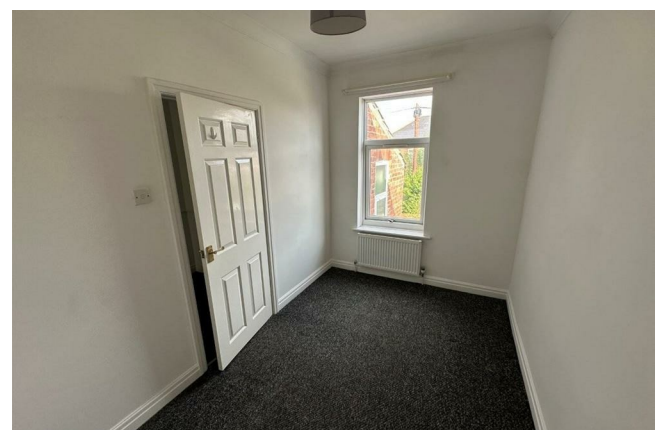
TLG are pleased to offer for let this deceptively large and tastefully decorated terraced property.

The home briefly comprises: entrance lobby leading to pleasant lounge with bay window, through to large living room/dining room with double patio doors opening on to the rear yard, through to a fully refitted kitchen with white units. To the first floor the home has a large double bedroom, good sized second bedroom and large bathroom complete with bath and over bath shower.

The home is complete with double glazing throughout and gas fired central heating.

The EPC rating for the home is E.



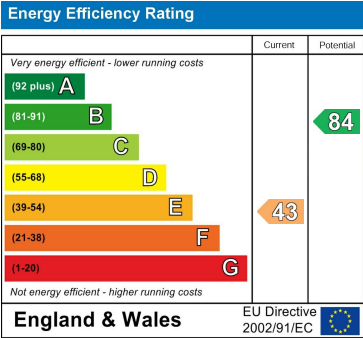


DARLINGTON | 29A DUKE STREET, DARLINGTON, COUNTY DURHAM, DL3 7RX

Council Tax Band

A

Energy Performance Graph



Call us on  
**01325 460 330**  
[kevin.studholme@thelettinggroup.com](mailto:kevin.studholme@thelettinggroup.com)

Agents Note: Whilst every care has been taken to prepare these particulars, they are for guidance purposes only. All measurements are approximate and are for general guidance purposes only and whilst every care has been taken to ensure their accuracy, they should not be relied upon and potential buyers are advised to recheck the measurements.